

CLUBKAMPIOENSCHAP 2024

RBSC Duinbergen Het Zoute and RBSC Zeebrugge

21th September 2024

Notice of Race & Sailing Instructions

1. GOVERNING RULES

- The Clubchampionship will be governed by the Racing Rules of Sailing (RRS)

For the yachts only:

- The ORC Special Regulations, Cat. 4.
 - Between sunset and sunrise, the International Regulations for Preventing Collisions at Sea (IRPCS) will replace the World Sailing Rules.
 - When encountering other shipping than racing yachts, the IRPCS or the local rules shall be complied with.
- Please apply the rules of the port authorities of Zeebrugge!**

2. ELIGIBILITY, ENTRY AND FEE

- Multihull: Open to all Multihull Classes C1, C3, C4. Groups are mentioned in the "SCHRS Rating System".
- Yachts: Open to all sailing yachts. The CR Rating system will be used.
- Lasers: Open to all lasers sailors
Any competitor under the age of 18 yrs will be required to obtain parental/guardian consent prior to commencement of the event.
- Payment of entry has to be made at registration.
Entry fee 30€ for all boats.
20€ for all single handed boats.
Entries may be submitted via our website, www.rbsc.be
Or to RBSC Duinbergen – Zeedijk 430A – 8301 Knokke-Heist. E-mail: duinbergen@rbsc.be
Or to RBSC Het Zoute – Zeedijk 871Y – 8300 Knokke-Heist. E-mail: zoute@rbsc.be
Or to RBSC Zeebrugge – Rederskaai 1 – 8380 Zeebrugge. E-mail: havenmeester@rbsc.be

3. SCHEDULE OF RACES AND FORMAT

- 3.1 The first warning signal is scheduled as follows:

Club Championship RBSC Duinbergen, Het Zoute and Zeebrugge 2024		
Date	Time	Event
21th September Saturday	09:30	Yacht's registration at the Harbour office in Zeebrugge
	10:00	Yacht's Briefing at the Harbour office in Zeebrugge
	10:00-11:00	Multihull – Laser registration in Duinbergen and Het Zoute
	11:00	Briefing participants in Duinbergen and Het Zoute
	11.30	Yacht's Warning Signal coastal race.
	12:15	Multihull Warning Signal 1 st race of the day. The warning signal for each succeeding race will be made as soon as practicable.
	+ -18.30 exact time will be announced after the last race	Prize giving at the Clubhouse Alberta + Diner participants

- 3.2 **Yacht's CR 1-2-3-4 + 5-6** : one "coastal race" is foreseen.
- 3.3 **Multihull's-Laser** : **A total of max 4** races windward-leeward race are scheduled.
- 3.4 For the multihulls and Laser, the warning signal for each succeeding race will be made as soon as practicable. To alert boats that a race or sequence of races will begin soon, the orange flag will be displayed with one sound **1 minutes** before a warning signal is made.

4. CLASS FLAGS

- 4.1 For the class CR (Yachts) the class flag will be the "W" flag.
- 4.2 For the class C4 and Laser the class flag will be a "Purple Hobie Cat" flag.
- 4.3 For the class C1 & C3 the class flag will be a "Q" flag (yellow).

5. RACING AREA

- The Racing Area is the North Sea; starting line in front of Knokke-Heist.

6. MARKS – START & FINISH LINE

- 6.1 For the multihulls, Laser all marks of the course will be inflatable buoys.
- 6.2 For the CR Yachts all marks of the course are describe in attachement 2 of this sailing instructions
- 6.3 For the multihulls-Laser and CR Yachts, the starting line will be between a staff displaying an orange flag on the starting mark at the starboard end and a black buoy at the port end.
- 6.4 For the multihulls -laser the finishing line will be between a staff displaying an blue flag on the finishing mark at the starboard end and a white buoy at the port end.
- 6.5 For the CR Yachts the finishing line is described in attachement 2 of this sailing instructions.

7. TIME LIMITS

- 7.1 For the multihulls – laser, a boat starting later than 10 minutes after her starting signal of her class will be scored Did Not Start.
- 7.2 For CR yachts a boat starting later than 30 minutes after her starting signal will be scored DNS.
- 7.3 For the multihulls a race shall be abandoned if no boat of their class finishes within 75 minutes.
- 7.4 For CR Yachts, the finish line will be closed at 17.30 hours. After 17.30 hours boats will have to write down their finish time themselves and text it to +32 496 78 90 53 (Cis).
- 7.5 For the multihulls, boats failing to finish within 20 minutes in real time after the third boat of their class sails the course and finishes will scored Did Not Finish.

8. SCORING

- 8.1 The regatta will be scored as provided in RRS Appendix A4.1 using the Low Point System.
- 8.2 When 3 or more races have been completed, the worst score will be excluded.
- 8.3 Multihull : tree results are foreseen, group C1, group C3 and group C4 as mentioned in the "ISAF SCHRS".
- 8.4 Yacht's : Two results are foreseen, one "Yachts CR 1-2-3-4" result and one "Yachts CR 5-6" result.
- 8.5 Laser : one result is foreseen.

9. SAFETY REGULATIONS

- 9.1 RRS 40 applies at all times while afloat, although flag "Y" will not be displayed. This changes RRS 40.
- 9.2 A boat that retires from a race shall notify the race committee as soon as possible (Yachts channel VHF72)
- 9.3 Competitors must have a mobile phone on board; this must be used only in case of emergency.
The following numbers can be reached:

Edouard beachmaster Duinbergen	+32477884048
Sven beachmaster Het Zoute	+32475928005
Beachclub Duinbergen	+3250515593
Beachclub Het Zoute	+3250621171
Marina Zeebrugge	+3250544903
Harbourmaster Zeebrugge	+32496789053

10. DISCLAIMER OF LIABILITY

- 10.1 Competitors participate in the regatta entirely at their own risk. Attention is drawn to the Fundamental RRS 4, Decision to race. The Organising Authority and the sponsors and their officers, jointly and severally, will not accept any liability for personal or material damage, injury or death sustained in conjunction with or prior to, during or after the regatta.

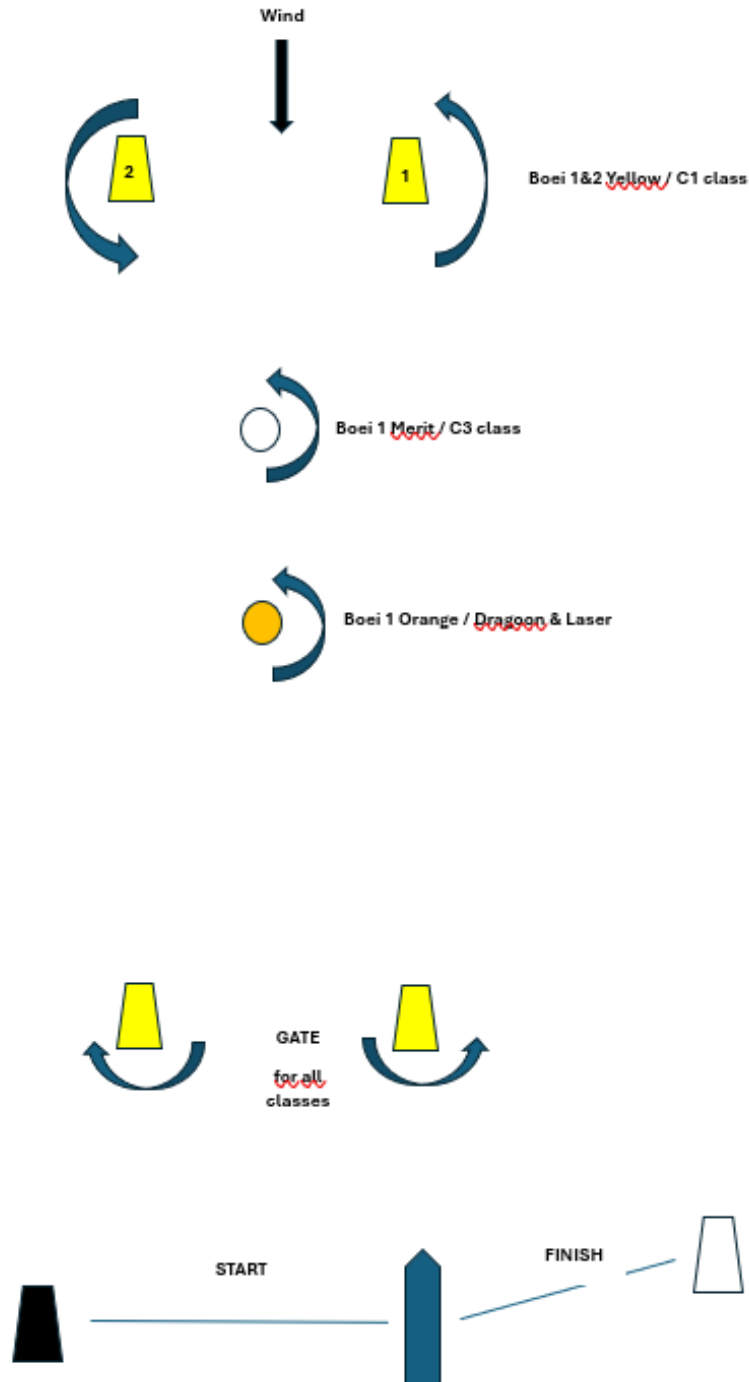
11. INSURANCE

- Each participant shall have a current Public Liability and Third Party Property Insurance policy, including coverage when racing at the venue of the Clubchampionship, of not less than 500.000 € or equivalent for each boat.

GENERAL INFORMATION

On Saturday evening at approximately 19:30 hours a **diner (Chateaubriand met salade en frietjes €40pp)** will be organised at the Clubhouse Alberta. **The diner is open to all participants and members of the Royal Belgian Sailing Club.** Reservations for the diner must be done before Friday 20th September 2024 by mail @ nathalie@rbsc.be, by phone on 050/54.49.03.

ATTACHMENT 1 (MULTI-LASER)



COURSE C4 - Laser BOATS : START – BOEI 1 DRAGLASER - GATE- BOEI1 DRAGLASER – GATE – FINISH

COURSE C3 BOATS : START – BOEI 1 Merit C3 - GATE- BOEI 1 Merit C3 - GATE – FINISH

COURSE C1 BOATS : START – 1 -2 - GATE- 1-2 GATE – FINISH

ATTACHMENT 2 COURSE CR YACHTS

Coastal Race for the CR Classes on Saturday 21th September.

The starting line will be between a staff displaying an orange flag on the starting vessel at the starboard end and a black buoy at the port end.

The finishing line will be between a staff displaying a blue flag on the finishing vessel at the PORT end and the MOW2 at the STARBOARD end.

Approximately 0,5 NM before the finishing line, boats must report on channel 15 to the race committee boat "race committee RBSC " announcing their approach.

Time limit : the finishing line will be closed at 17.30 hours. After 17.30 hours boats will have to write down their finish time themselves and text it to +32 496 78 90 53 (Cis).

When the course is shortened, a race committee boat near the mark will display flag S and boats shall finish by sailing between the mark and the committee boat from the direction of the previous mark.

***At the start when the starting vessel** : - is displaying a red flag, buoy 1 has to be left on port
- is displaying a green flag, buoy 1 has to be left on starboard

Course CR 1-2-3-4 5-6:

Start

Mark 1 yellow buoy (**YELLOW** inflatable buoy into the wind)*

BVH stb

W1 stb

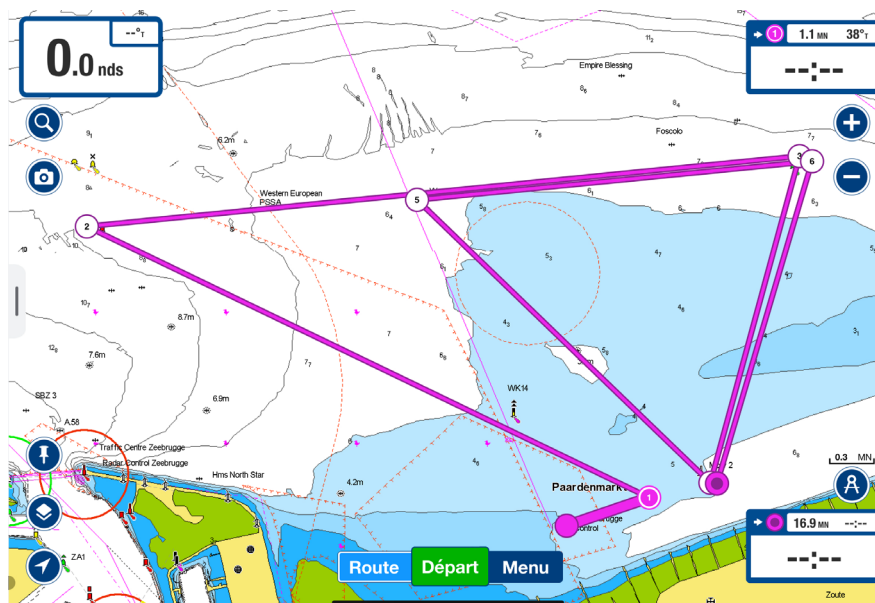
MOW2 stb

W stb

W1 stb

Finish (between the finishing vessel displaying a blue flag at the PORT end and the MOW2 at the STARBOARD end)

+/-16nm (possibility to shorten the course at the first rounding of MOW2 +/-10NM).



Longueur **16.3 MN** Durée **2h 02m** Carburant **2.0 L**
En fonction des paramètres du bateau

Stop Modifier Partager Supprimer

51°21.490'N • 3°16.196'E
Départ

1 Waypoint 1
0.5 MN • 71° • 3m 42s

2 Waypoint 2
3.5 MN • 296° • 26m 21s
Du départ 4.0 MN • 30m 03s

3 Waypoint 3
4.0 MN • 84° • 30m 13s
Du départ 8.0 MN • 1h 00m

4 Waypoint 4
1.9 MN • 195° • 14m 13s
Du départ 9.9 MN • 1h 14m

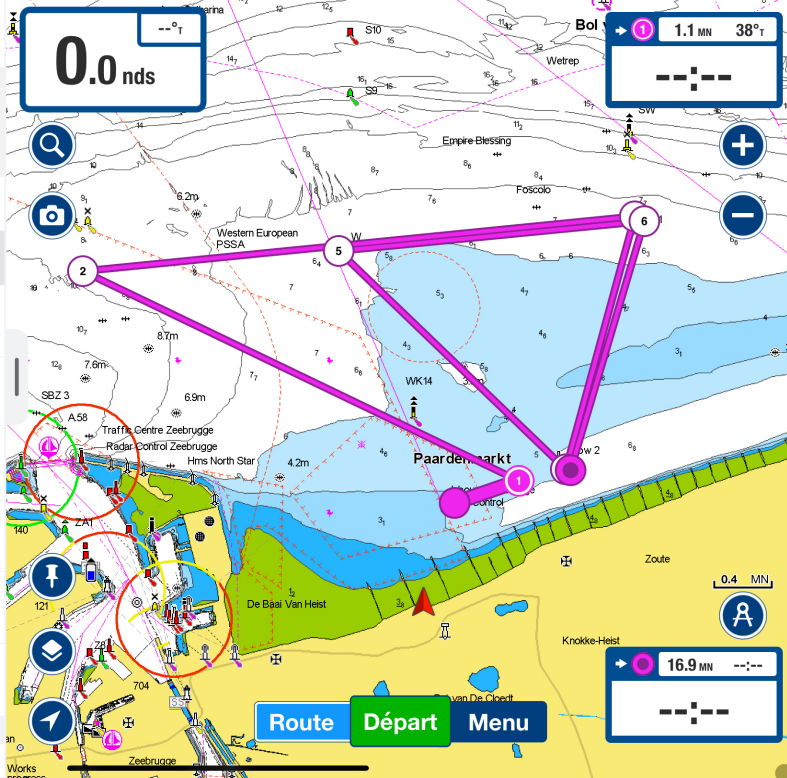
5 Waypoint 5
2.3 MN • 314° • 17m 08s
Du départ 12.2 MN • 1h 31m

6 Waypoint 6
2.2 MN • 84° • 16m 43s
Du départ 14.4 MN • 1h 48m

51°21.726'N • 3°17.543'E
1.9 MN • 197° • 14m 07s
Du départ 16.3 MN • 2h 02m

Aux alentours de votre destination

Marinas et mouillages



**We wish you a pleasant Club RBSC Championship
Duinbergen, Het Zoute and Zeebrugge 2024!
THANKS TO OUR SPONSORS!**